

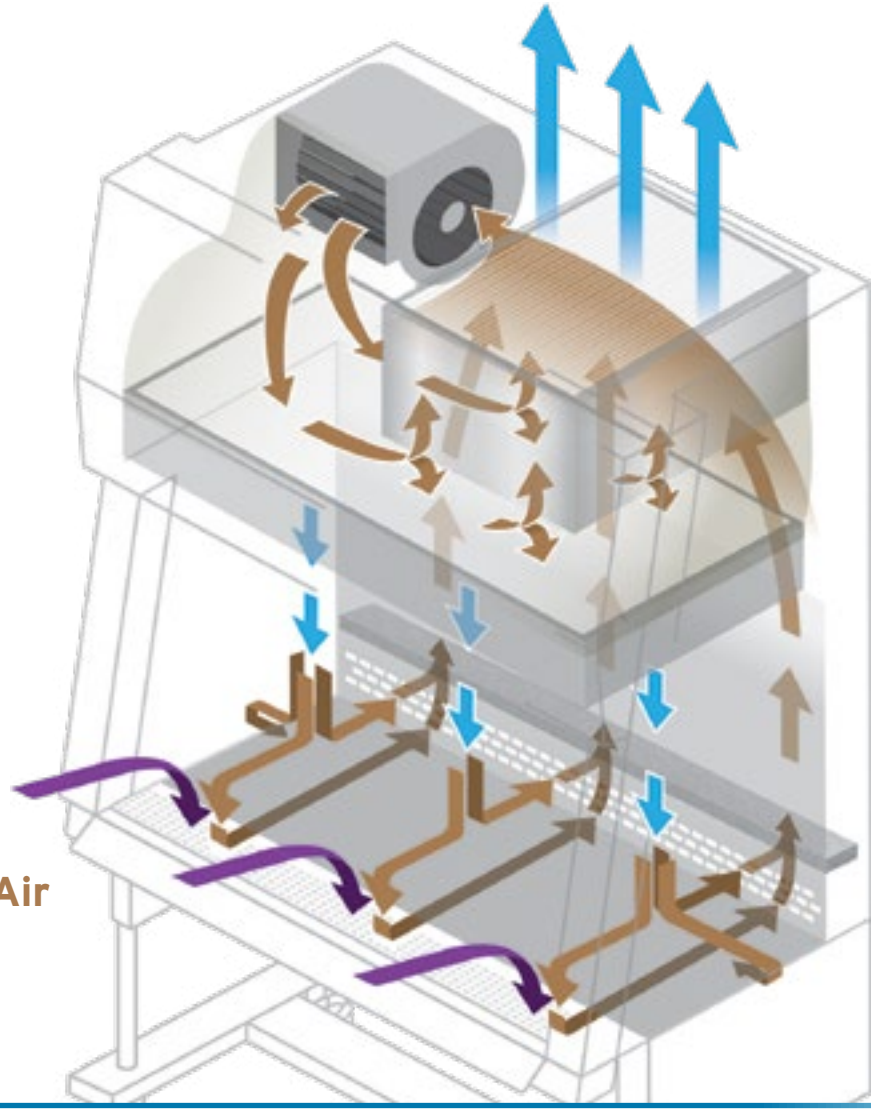
10 TIPS FOR WORKING SAFELY IN AN ANIMAL HANDLING BIOSAFETY CABINET

Good technique when working within a Class II Biosafety Cabinet (BSC) helps prevent the unwanted spread of biohazards.

1 KNOW THE AIRFLOW

Biological Safety Cabinets (BSCs) provide personnel, product, and environmental protection through the use of HEPA-filtered air.

-  HEPA Filtered Air
-  Contaminated Worksurface Air
-  Contaminated Room Air

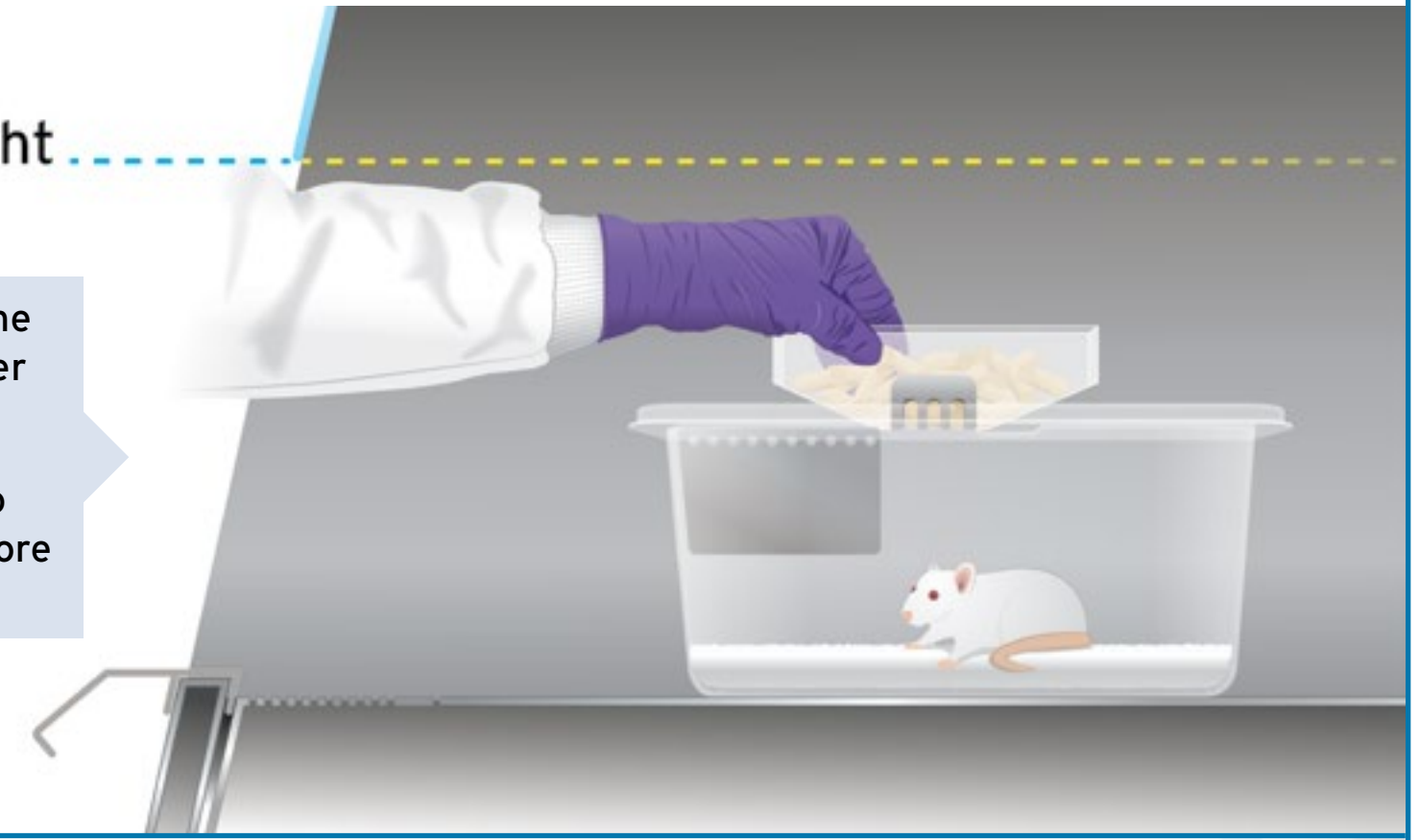


2 WORK AT THE PROPER SASH LEVEL

Working Height

If necessary, lift the sash to place larger cages in the BSC.

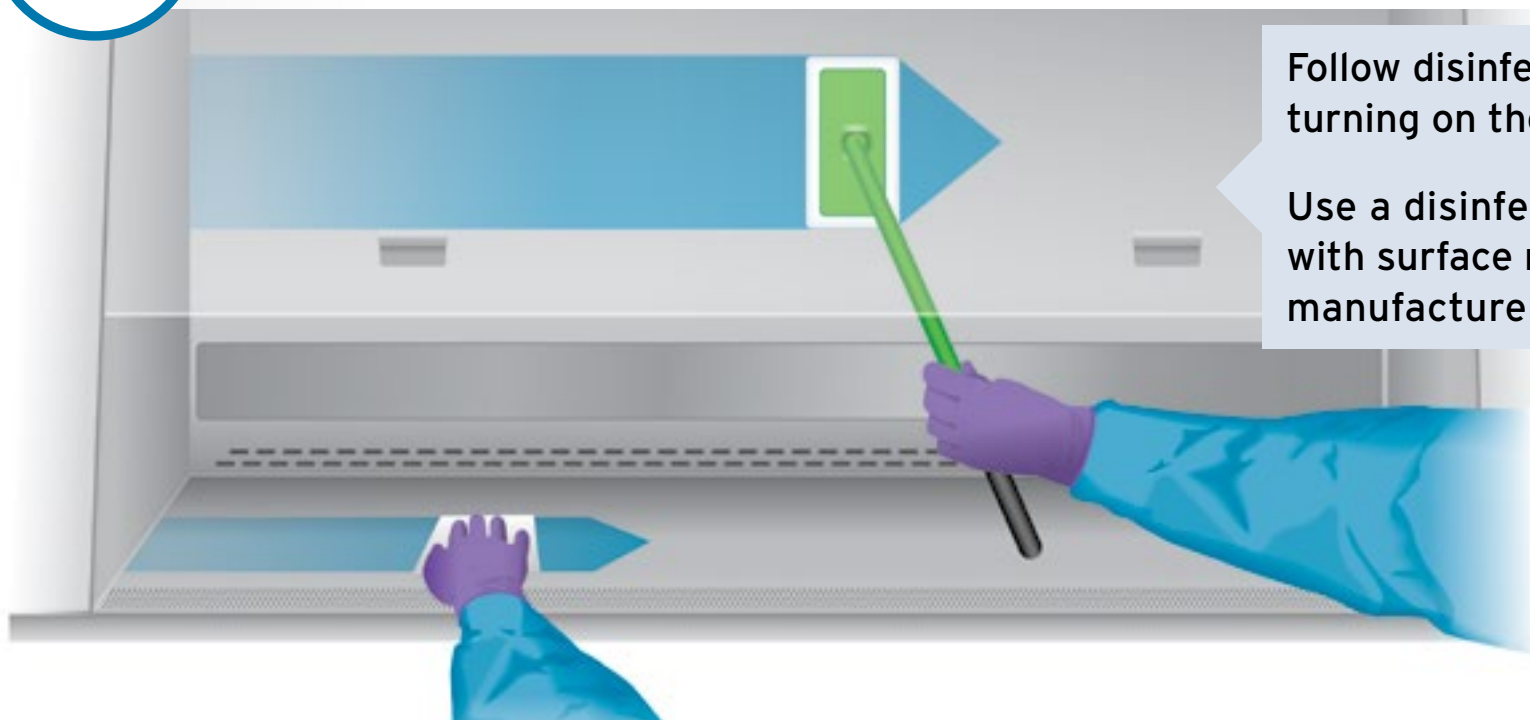
Return the sash to working height before opening cages.



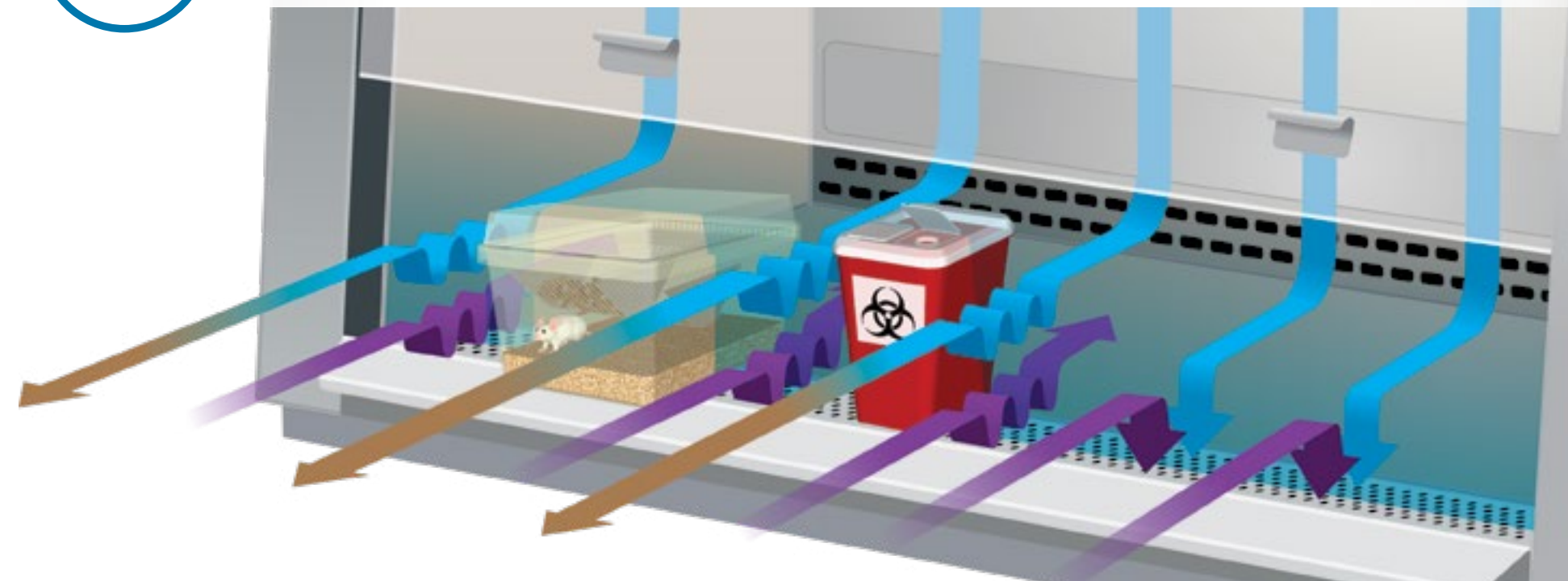
3 DISINFECT WORK AREA

Follow disinfecting SOP before turning on the blower.

Use a disinfectant compatible with surface materials & follow manufacturer's directions.

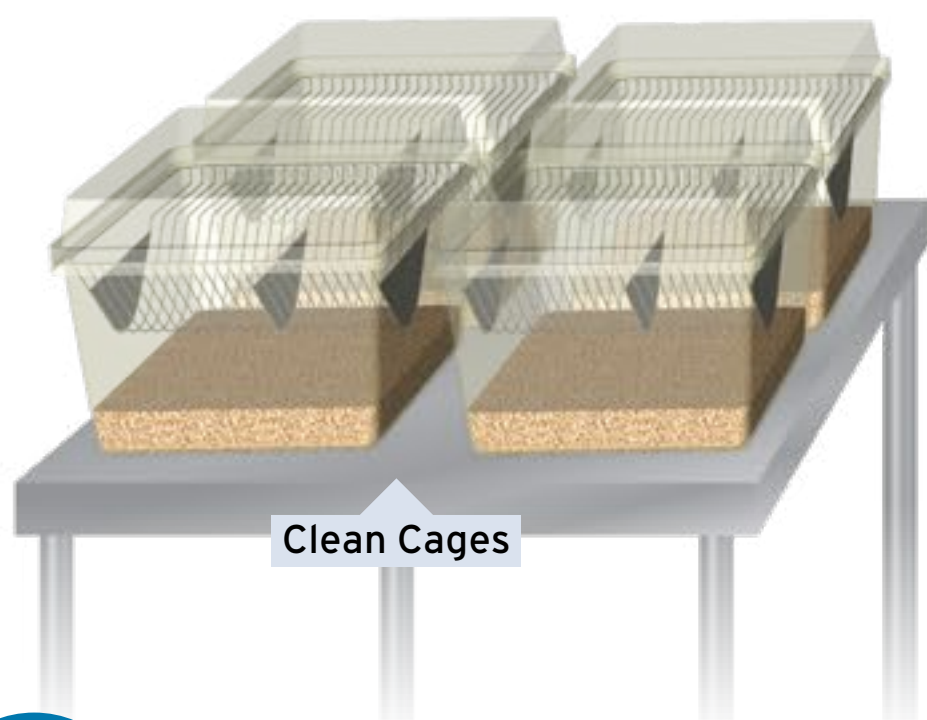


4 NEVER COVER THE AIR GRILL



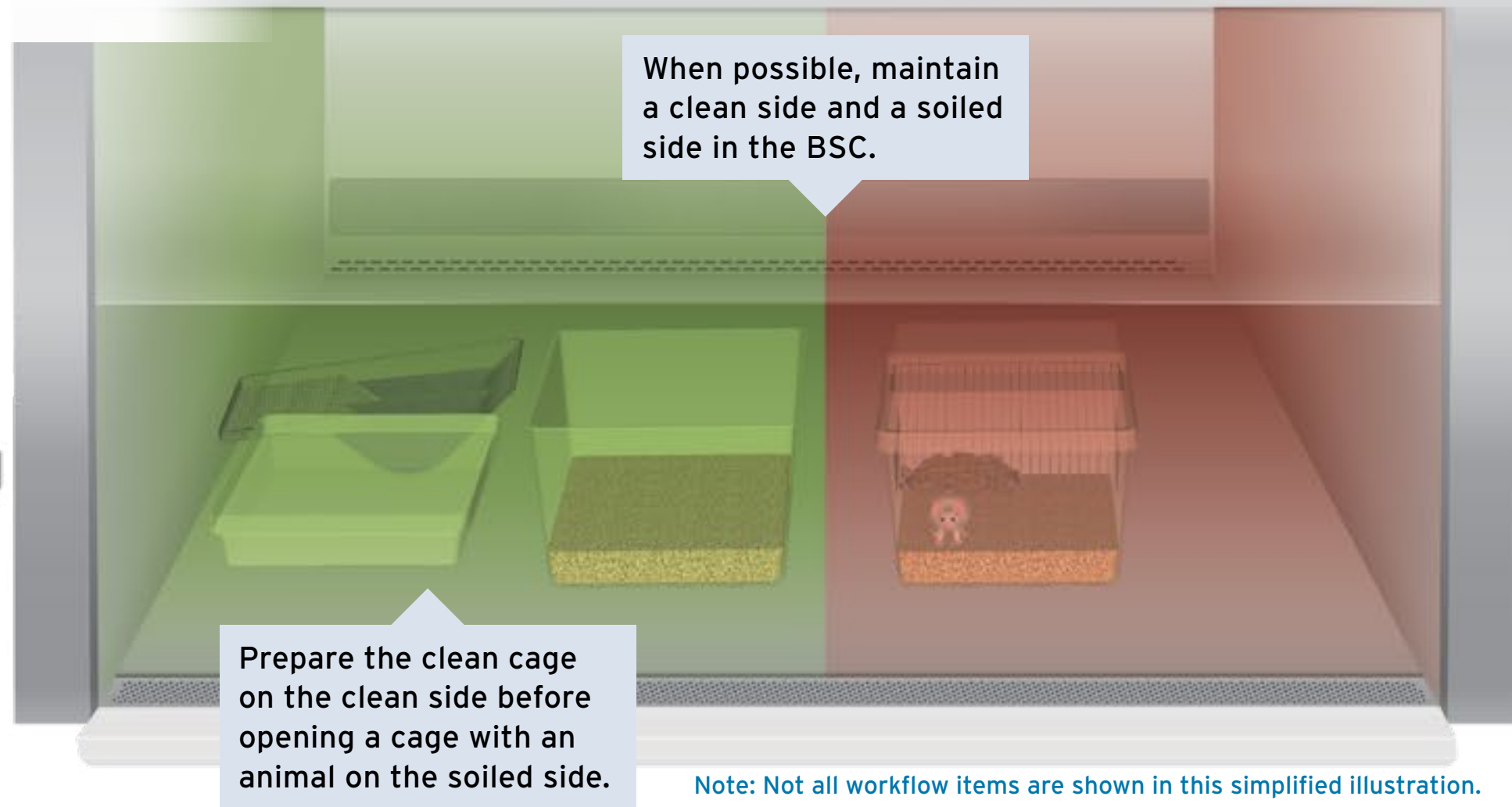
5 PREPARE ITEMS FOR HUSBANDRY OR OTHER PROCEDURES NEAR THE BSC

Clean cages may be positioned on a cart adjacent to the BSC.



Clean Cages

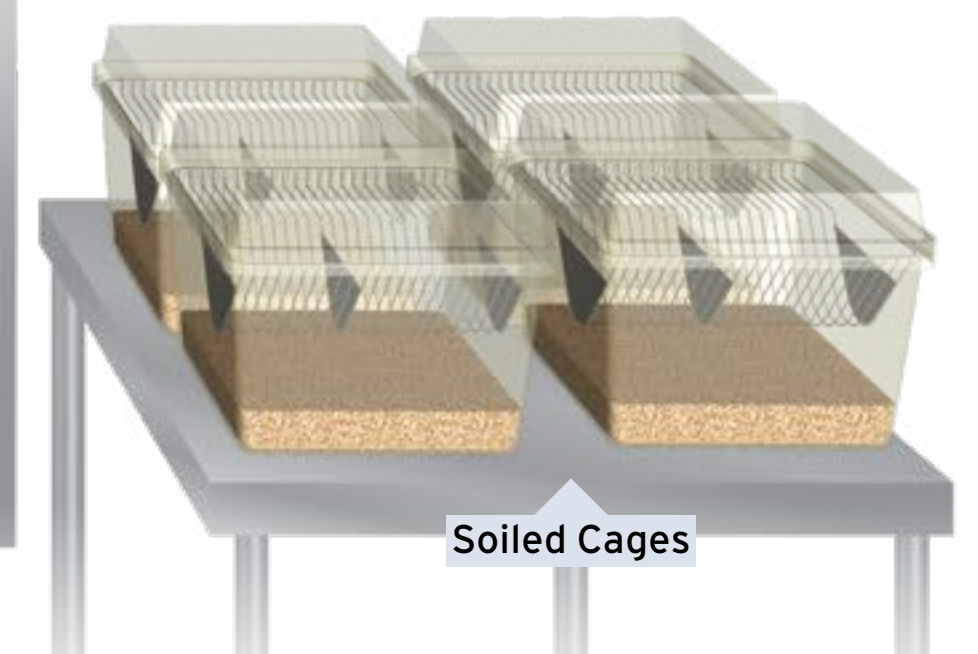
When possible, maintain a clean side and a soiled side in the BSC.



Prepare the clean cage on the clean side before opening a cage with an animal on the soiled side.

Note: Not all workflow items are shown in this simplified illustration.

Follow SOPs for soiled cages.



Soiled Cages

7 PREPARE THE CLEAN CAGE FIRST AND WORK FROM CLEAN TO SOILED

8 ONLY OPEN ONE CAGE WITH ANIMALS AT A TIME

Only one cage with animals should be open at a time to prevent cross contamination.



9 AVOID CROSS-CONTAMINATION



Disinfect cages prior to placing them in the BSC.

Spray gloves with disinfectant before handling cage contents.

Transfer animals from soiled cages to the clean cages with disinfected hands or forceps.

Promptly remove soiled cages from the BSC

Follow micro isolation* SOPs

* Micro-Isolator® is a registered trademark of Lab Products, LLC

10 CLEAN AND DISINFECT THE WORK AREA AFTER FINISHING WORK

