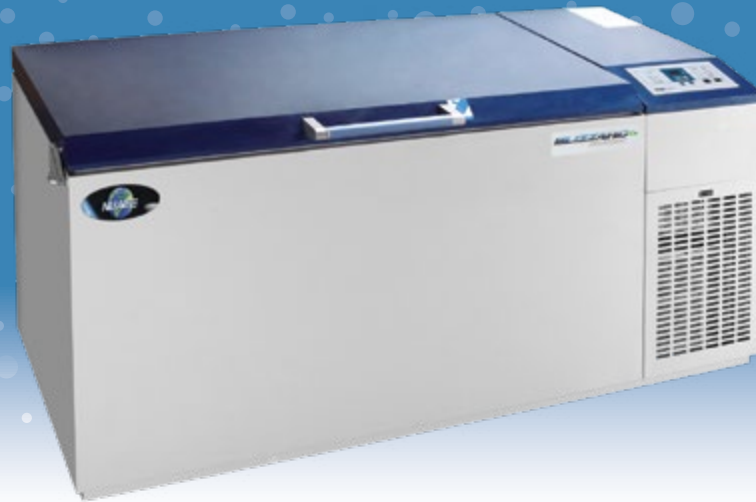


BLIZZARD HC

-86°C ULT FREEZER | NU-99420J

-86 ULTRA-LOW TEMPERATURE FREEZERS



SPECIFICATIONS

Model	NU-99420J
Interior Volume	420 L / 14.8 ft ³
Exterior Dimensions (W x D x H)	2130 x 870 x 1020 mm 83.9 x 34.3 x 40.2 in
Interior Dimensions (W x D x H)	1367 x 462 x 652 mm 53.8 x 18.2 x 25.7 in
Temperature Range	-40°C to -86°C
Net Weight	310 kg / 682 lbs
Noise (dB(A))	49

PERFORMANCE

Temperature Uniformity	± 5°C
Temperature Accuracy	± 1°C
Cool Down Time (25°C ambient to -80°C)	240 Minutes
Warm Up Time (25°C ambient -80°C to -50°C)	150 Minutes
1 Min Door Open Recovery Time (25°C ambient running temp -75°C)	30 Minutes

CONSTRUCTION

Insulation	CFC Free Foaming Agent
Exterior Door Seal	One Seal on the Outside Door
Interior Door Seal	N/A
Shelves/Capacity/Dims/Material	N/A
Casters	All-direction caster with fixing stand
Exterior Material	Color Coating Cold Plate Steel
Interior Material	Stainless Steel
Door Thickness	80mm / 3.14 in
Cabinet Thickness	140mm / 5.5 in
Inner Doors	Three Solid Doors
Condenser Type	Enhanced Micro-Channel & Forced-Air Cooled
Fan Brand	EBM
Back Up Battery For Alarm Functions	High/low temperature, power failure, door open, sensor failure, high ambient temperature, hot condenser, and low battery alarms



Nuaire, Inc. | (763) 553-1270 | NUAIRE.COM



-86°C ULT FREEZER | NU-99420J

-86 ULTRA-LOW TEMPERATURE FREEZERS

REFRIGERATION

Refrigeration System Type	Direct cooling
Compressor Type/Brand/Number	Hermetic Reciprocating Type / SECOP / 2
Compressor Capacity (W)	950
Evaporator Type	Cold Wall With Enhanced Heat Transfer Treatment
Defrost Method	Manual
Refrigerant Charge/Flammable	R290 in 1st Stage / R290 + R170 Mix in 2nd Stage / Flammable

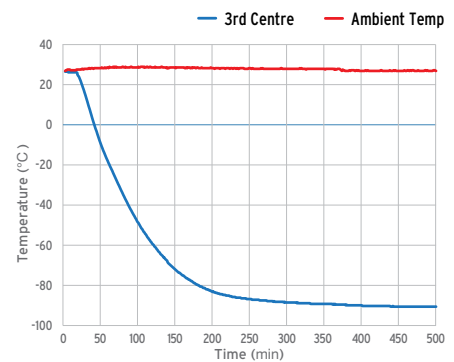
CONTROLS & SYSTEM FEATURES

Control Panel Location	Eye-level
Power Switch	On-Off with Circuit Breaker
Controller Type	Microprocessor Control, LED Display, USB Data Export
Setpoint Security	Yes
Controller Sensor	PT100
Remote Alarm Terminals	Remote Alarm Port, RS232 / RS485 (Optional)
Adjustable High/Low Temp Alarms	Adjustable
Auto Voltage Safeguard	Included

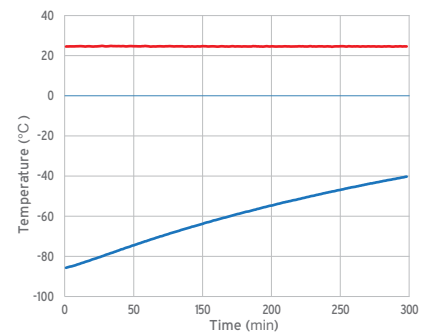
ENVIRONMENTAL & ELECTRICAL

Electrical Power*	
* Add letter suffix to model number to indicate electrical specifications. NU-99420JE = 230V / 60Hz	G = 220V / 60Hz E = 230V / 50Hz
Power (W)	1000
Power Consumption (kW-hr/day)	12.5
Electrical Current (A)	7.5
Building Supply Rating (A)	16
Power Cord Length (m)	2.5
Heat Rejection (BTU/day)	42652
Ambient Temperature	10°C ~ 32°C
Quality Assurance	UL, cUL

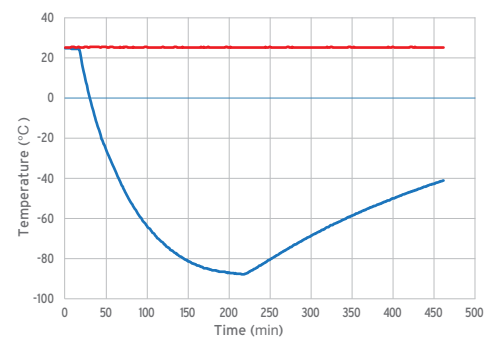
TYPICAL PERFORMANCE CHARACTERISTICS (25°C AMBIENT)



Temperature Cool Down Curve



Temperature Recovery Curve



Comprehensive Curve

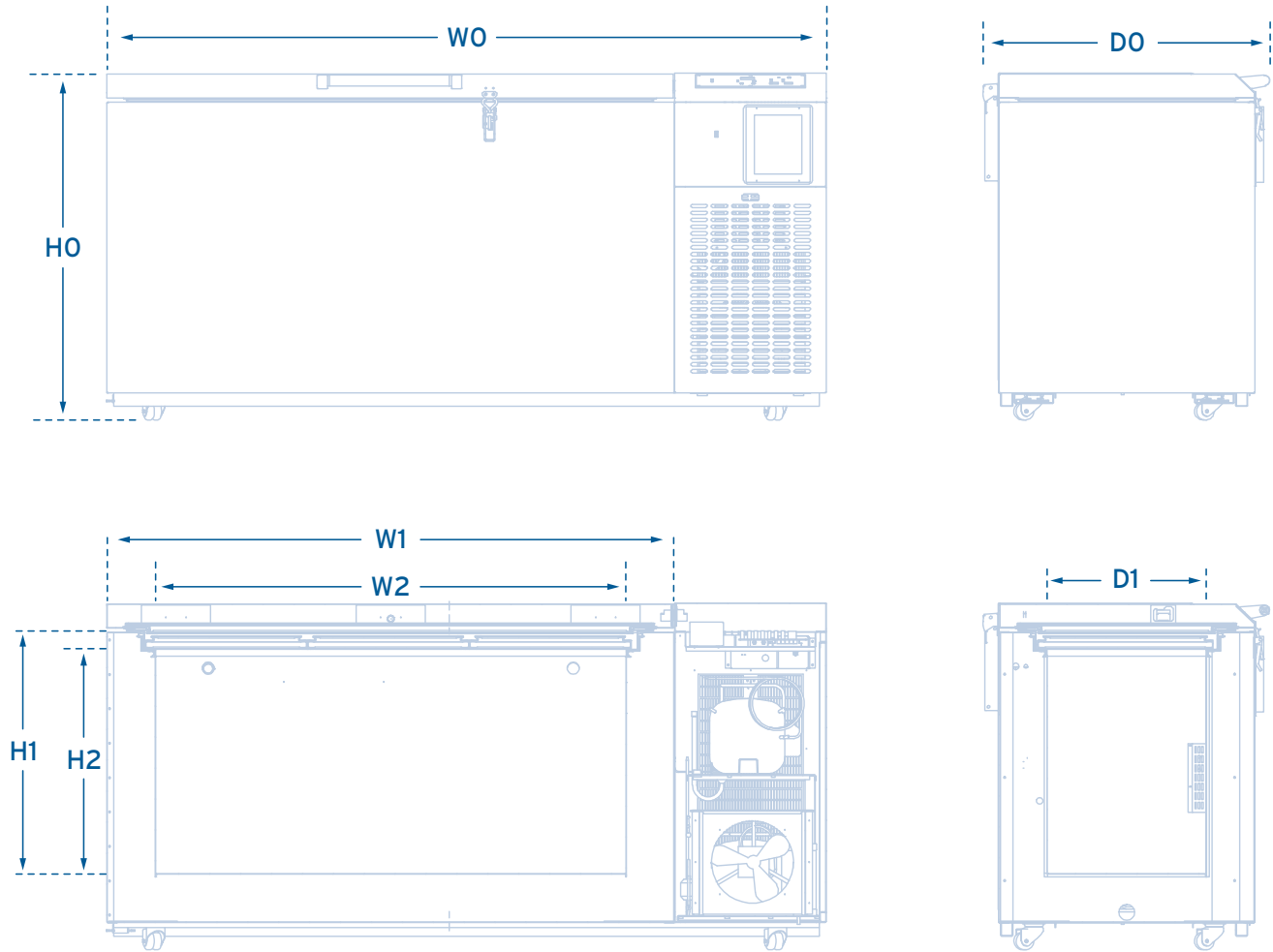




-86°C ULT FREEZER | NU-99420J

-86 ULTRA-LOW TEMPERATURE FREEZERS

PRODUCT DIMENSIONS



WO	W1	W2	HO	H1	H2	DO	D1
2130 mm	1650 mm	1367 mm	1020 mm	702 mm	652 mm	870 mm	462 mm

WO - Total Width
W1 - Freezer Width

W2 - Inner Cabinet Width
HO - Total Height

H1 - Inner Cabinet Height
H2 - 1st Compartment Height

DO - Total Depth
D1 - Inner Cabinet Depth





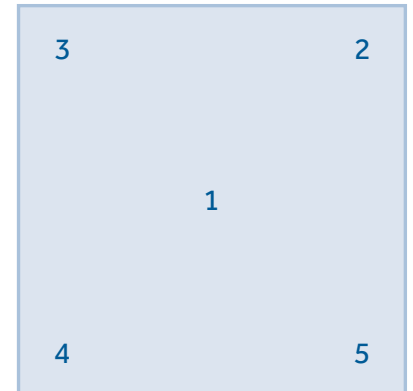
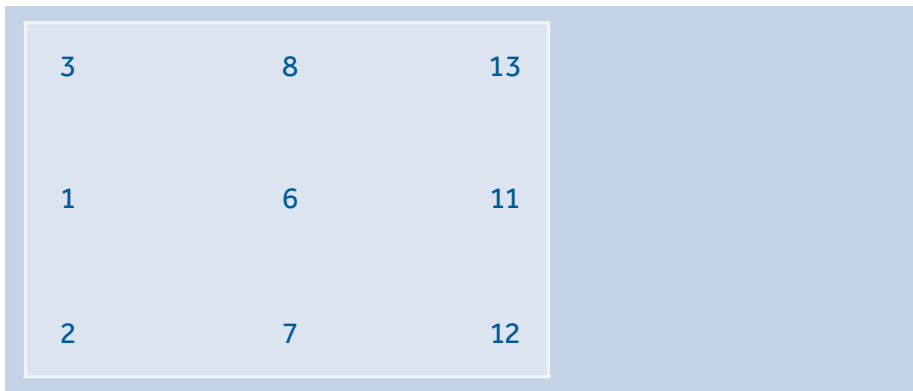
-86°C ULT FREEZER | NU-99420J

-86 ULTRA-LOW TEMPERATURE FREEZERS

TYPICAL CABINET TEMPERATURE MAP

TOP VIEW OF SHELVES

LEFT VIEW OF SHELVES



°C	1	2	3	4	5	6	7	8	9	10
Max.	-79.3	-77.1	-76.9	-79.3	-79.6	-79.3	-77.5	-77.1	-79.1	-79.1
Min.	-80.4	-80.1	-80.3	-80.7	-80.7	-80.2	-78.5	-78.2	-80.0	-80.2
Avg.	-79.9	-78.6	-78.6	-80.0	-80.2	-79.8	-79.8	-78.0	-79.6	-79.7

°C	11	12	13	14	15
Max.	-79.4	-76.9	-76.9	-79.3	-79.5
Min.	-80.3	-80.8	-80.4	-81.0	-80.5
Avg.	-79.9	-78.9	-78.7	-80.2	-80.0

