

**TECHNICAL BULLETIN
ACCESSORY INFORMATION**



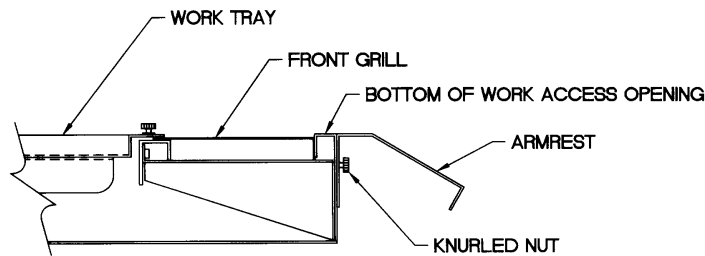
2100 Fernbrook Lane
Plymouth, MN 55447-4722
U.S.A.

Phone: 763.553.1270
Fax: 763.553.0459
Toll Free: 1.800.328.3352

ARMREST

NuAire has developed an armrest for various Class II Biological Safety Cabinets (BSC). The armrest was developed to enhance the BSC ergonomic design for improved forearm support. Lack of forearm support causes overuse of muscles supporting the arms. Often, this results in pain and muscle tension in and around the shoulders, upper back and neck.

The design of the armrest provides an extension of the current work access opening. The extension provides a 2 inch (51mm) horizontal, flat surface and a outside 3-inch (76mm) edge, which is sloped at a 30-degree angle.



The armrest is easily attached and removed for ease of use and clean ability. The armrest is installed on three 1/4-20 weldstuds and fastened to the BSC flush with the bottom of the work access opening using three hand-tightened knurled nuts.

