

**TECHNICAL BULLETIN
ACCESSORY INFORMATION**



2100 Fernbrook Lane
Plymouth, MN 55447-4722
U.S.A.
Phone: 763.553.1270
Fax: 763.553.0459
Toll Free: 1.800.328.3352
www.nuaire.com

**NU-995 Animal Feed Hopper
Specification and Installation Instructions**

General

The NU-995 Animal Feed Hopper is used on the NU-612 animal transfer station to provide a clean source of food during the animal transfer process. The NU-995 is positioned on the NU-612 right or left sidewall workzone post held in place with (2) knurled screws and a magnetic strip.

Cleaning/Autoclaving

The NU-995 animal feed hopper is constructed using type 304 stainless steel, except for the polypropylene magnetic bumper strip and tube-cap. **The bumper strip and tube cap must be removed for cleaning, washing, or autoclaving.**

Replacement Parts

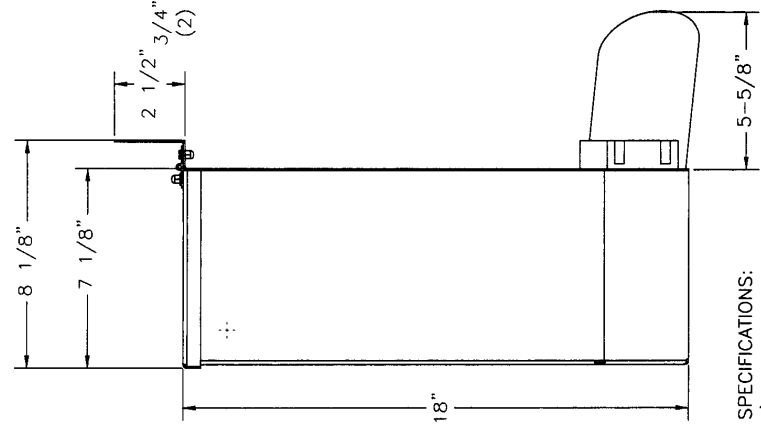
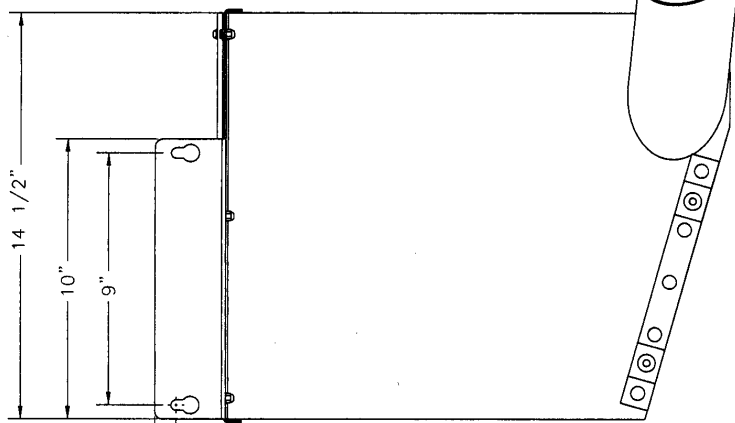
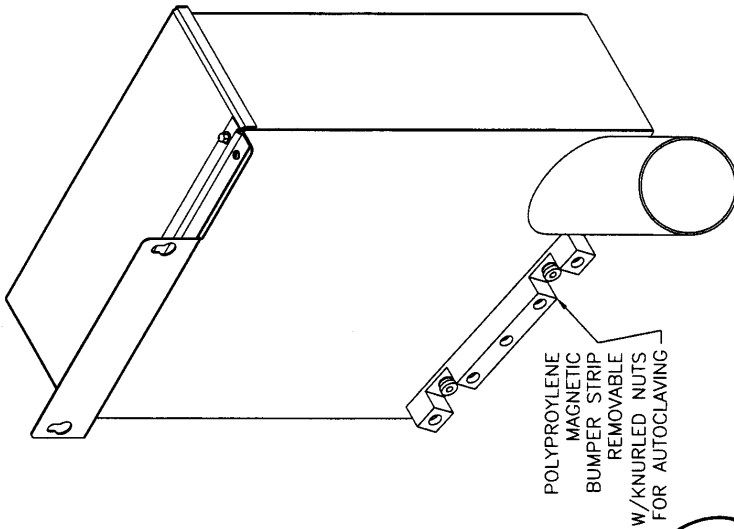
<u>Qty.</u>	<u>Description</u>	<u>Part Number</u>
1	Polypropylene magnetic bumper strip	B-995-1022
2	1/4 - 20 x 1" knurled screws	X-980497-01
2	1/4 - 20 knurled nuts	X-980499
1-2	SST scoop	X-980951-01
1-2	Assy, Tube Cap	B-995-1031

The NU-995 Animal Feed Hopper is available in (3) configurations,

NU-995-01 right side chute
NU-995-02 left side chute
NU-995-03 dual chute

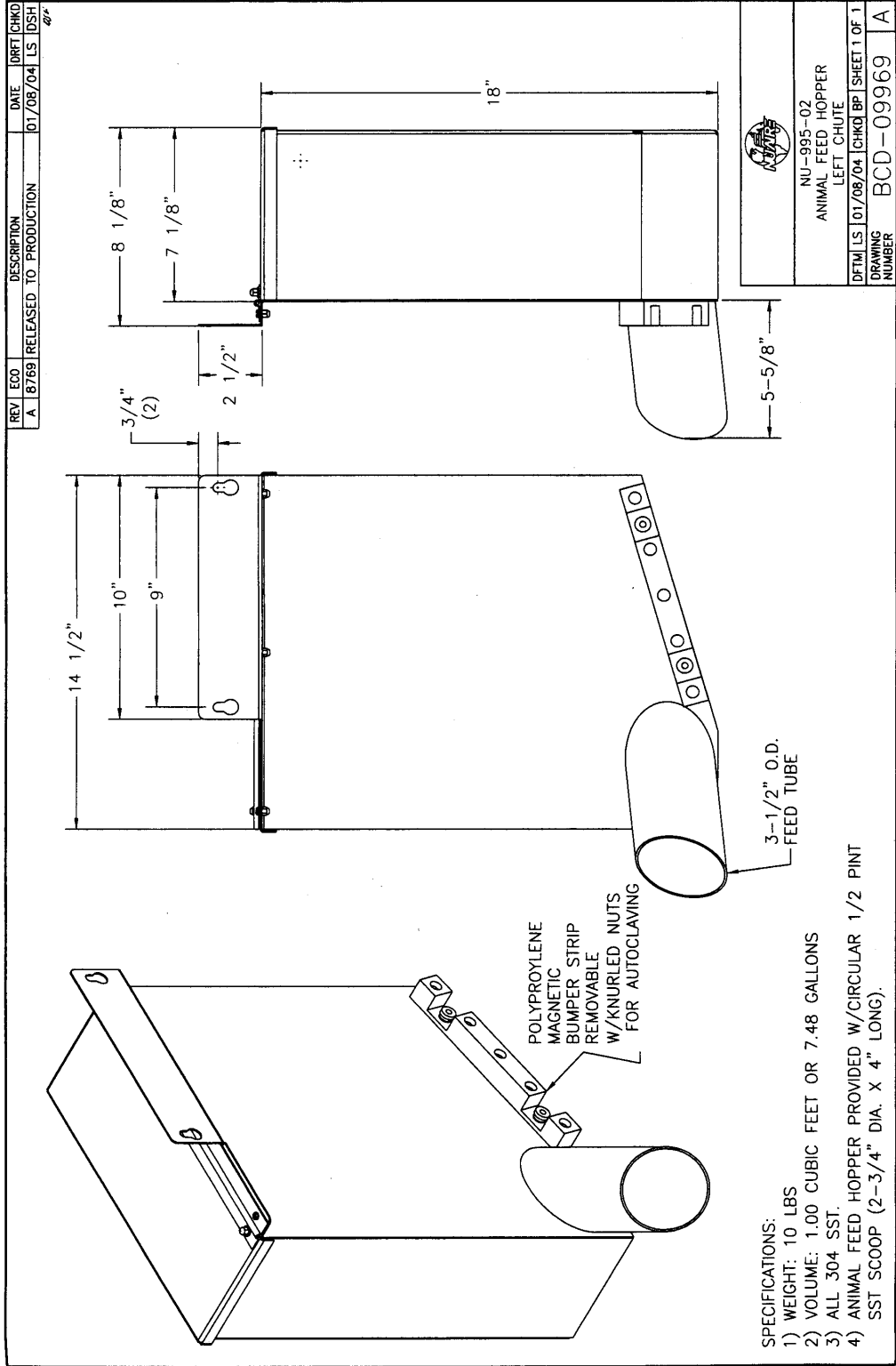
Specifications and installation instructions are located on the attached drawings.

REV	ECO	DESCRIPTION	DATE	DRAFT	CHKD
B	8/69	UPDATED DRAWING	01/08/04	LS	DSH



NU-995-01 ANIMAL FEED HOPPER RIGHT CHUTE	
DFTM JR	2-13-03
CHKD	BP
SHEET 1 OF 1	
DRAWING NUMBER	BCD-09576
	B

- SPECIFICATIONS:
- 1) WEIGHT: 10 LBS
 - 2) VOLUME: 1.00 CUBIC FEET OR 7.48 GALLONS
 - 3) ALL 304 SST.
 - 4) ANIMAL FEED HOPPER PROVIDED W/CIRCULAR 1/2 PINT SST SCOOP (2-3/4" DIA. X 4" LONG).



REV	ECO	DESCRIPTION	DATE	DRAWN
A		RELEASED TO PRODUCTION	01/08/04	LS DSH

REV	ECO	DESCRIPTION	DATE	DRAWN

REV	ECO	DESCRIPTION	DATE	DRAWN

REV	ECO	DESCRIPTION	DATE	DRAWN

REV	ECO	DESCRIPTION	DATE	DRAWN

REV	ECO	DESCRIPTION	DATE	DRAWN

REV	ECO	DESCRIPTION	DATE	DRAWN

REV	ECO	DESCRIPTION	DATE	DRAWN

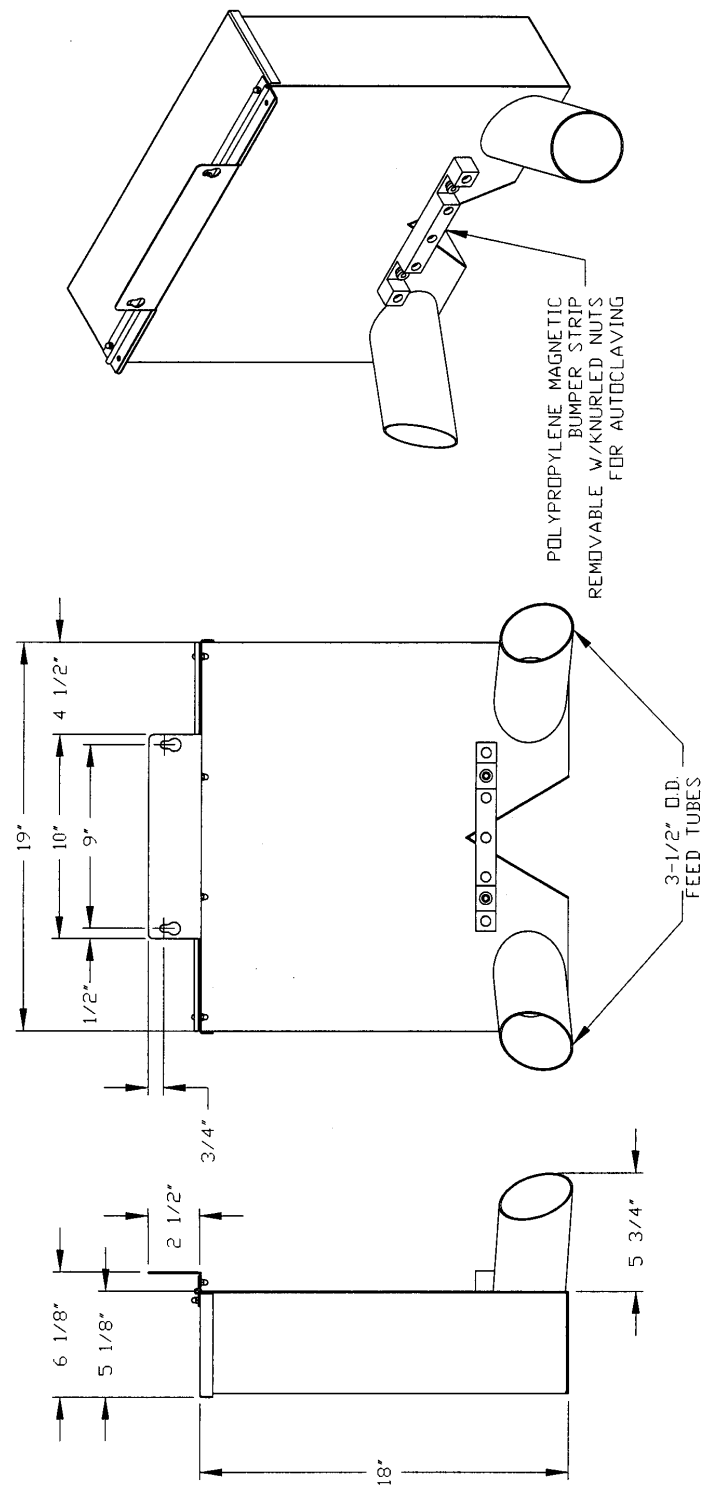
REV	ECO	DESCRIPTION	DATE	DRAWN

REV	ECO	DESCRIPTION	DATE	DRAWN

REV	ECO	DESCRIPTION	DATE	DRAWN

REV	ECO	DESCRIPTION	DATE	DRAWN

REV	ECO	DESCRIPTION	DATE	DRAWN



REV	ECO	DESCRIPTION	DATE	DRAWN

REV	ECO	DESCRIPTION	DATE	DRAWN

REV	ECO	DESCRIPTION	DATE	DRAWN

REV	ECO	DESCRIPTION	DATE	DRAWN

REV	ECO	DESCRIPTION	DATE	DRAWN

REV	ECO	DESCRIPTION	DATE	DRAWN

REV	ECO	DESCRIPTION	DATE	DRAWN

REV	ECO	DESCRIPTION	DATE	DRAWN

REV	ECO	DESCRIPTION	DATE	DRAWN

REV	ECO	DESCRIPTION	DATE	DRAWN

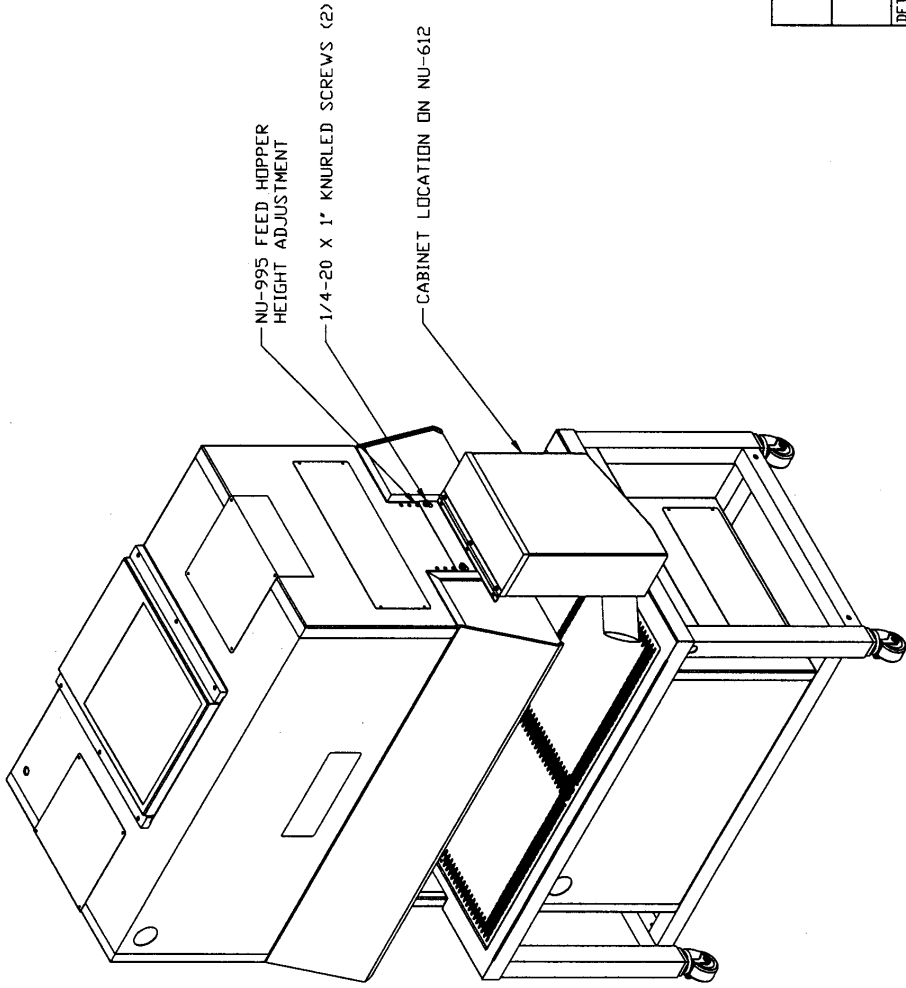
REV	ECO	DESCRIPTION	DATE	DRAWN


REV	ECO	DESCRIPTION	DATE	DRAWN

- SPECIFICATIONS:
- 1) WEIGHT 12 LBS
 - 2) VOLUME 1.00 CUBIC FEET OR 7.48 GALLONS
 - 3) ALL 304 SST
 - 4) ANIMAL FEED HOPPER PROVIDED W/CIRCULAR 1/2 PINT SST SCOOP (2-34" DIA. X 4" LONG)

REV	ECO	DESCRIPTION	DATE	DRET	CHKD
A	B769	RELEASED TO PRODUCTION	01/08/04	LS	DSH

2/4



						
NU-995 ANIMAL FEED HOPPER ATTACHMENT						
DFTH	LS	01/08/04	CHKD	DSH	SHEET 1	DF 1
DRAWING NUMBER				BCD-09971		
				A		