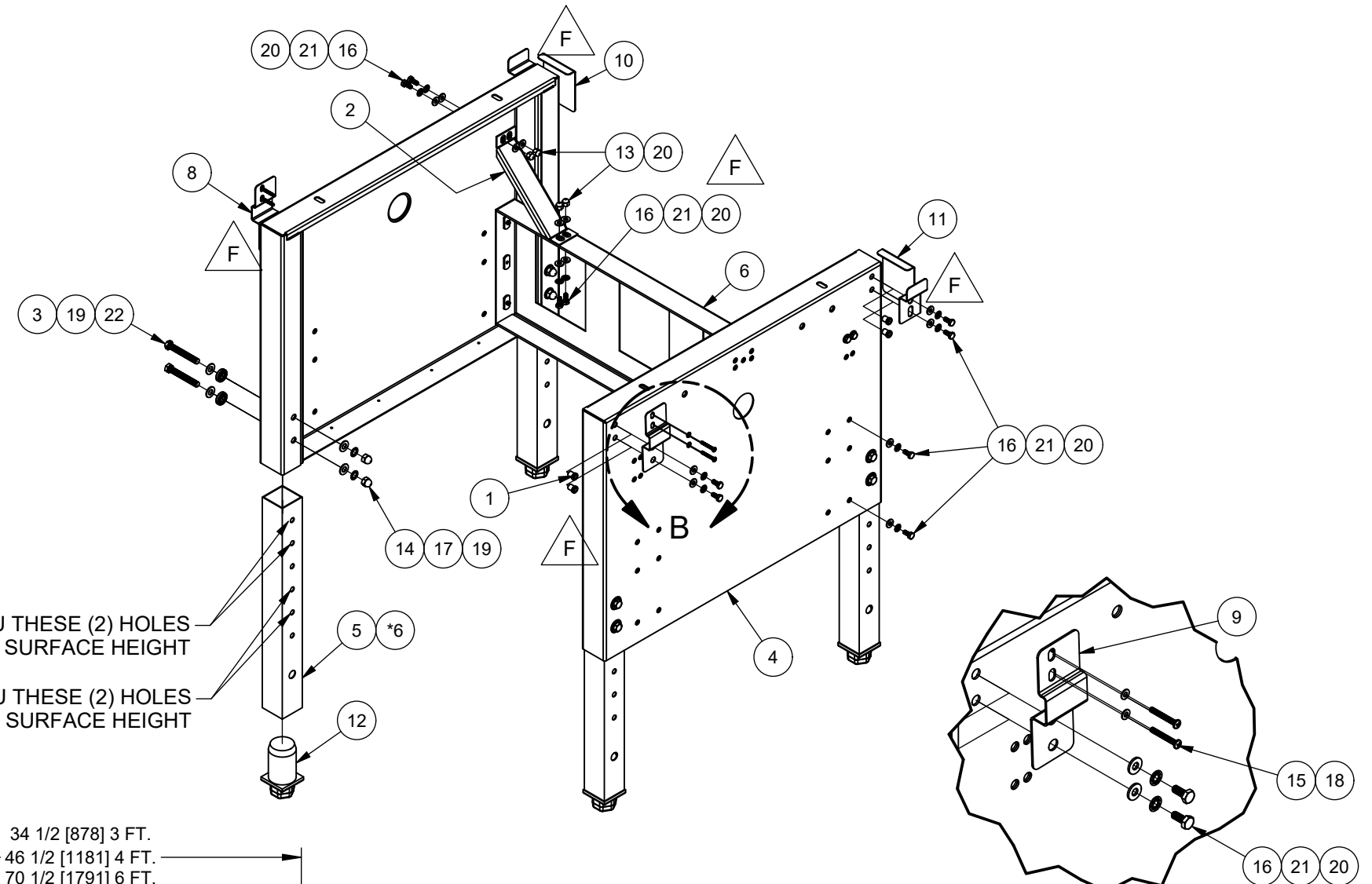


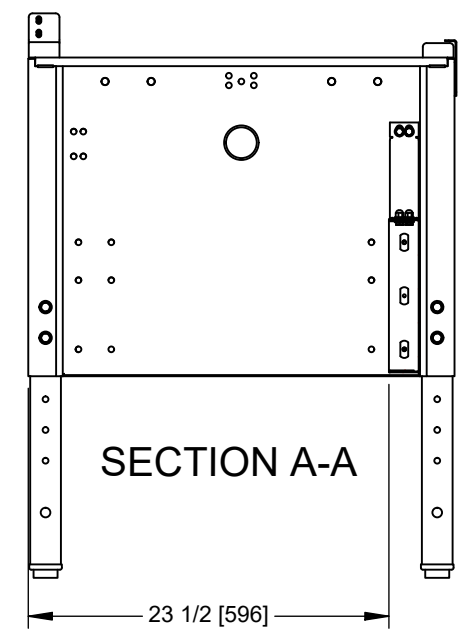
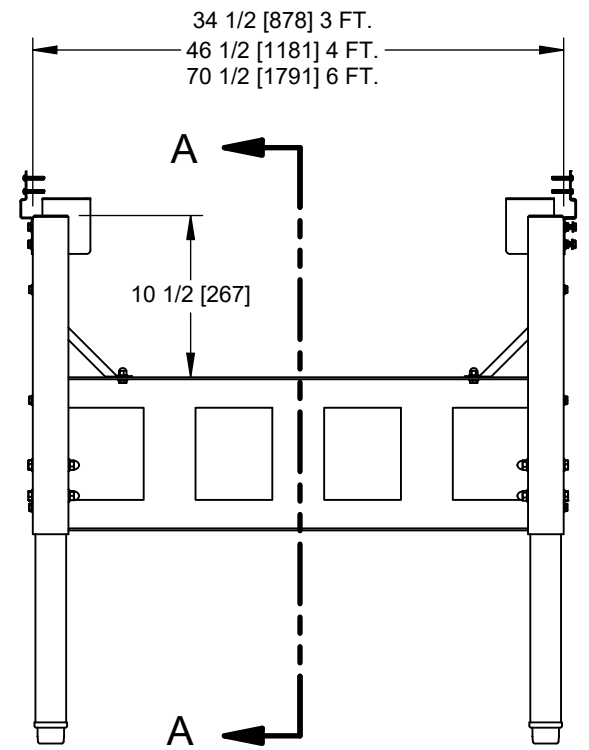
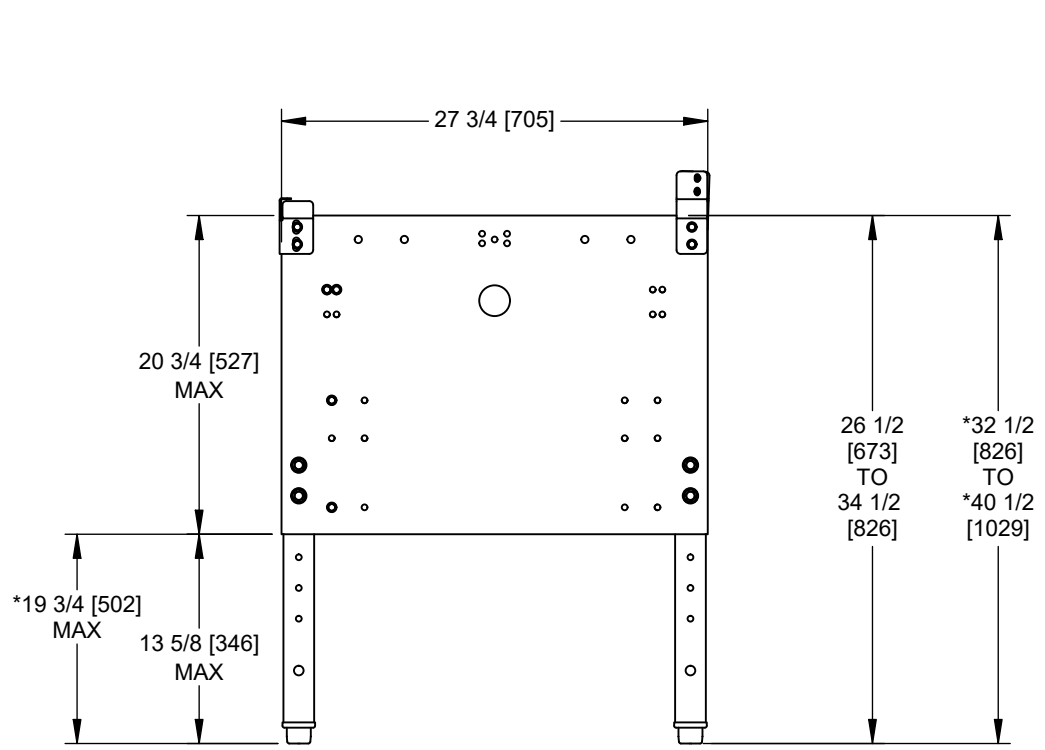
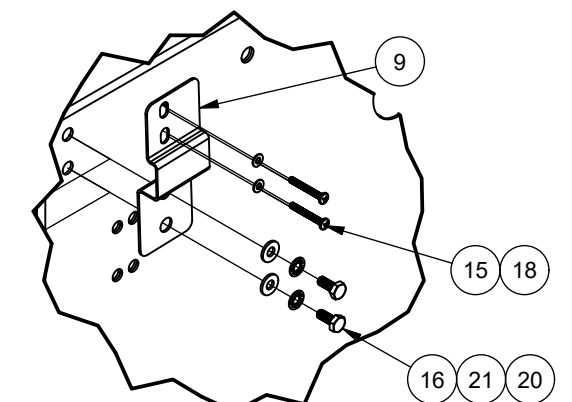
Parts List						
ITEM	QTY	PART NUMBER	3 FT.	4 FT.	6 FT.	DESCRIPTION
1	8	980-000025				Nutcert 1/4-20 UNC
2	2	A-425-7373				Lateral Biosafety Cabinet Latch
3	8	A-500-395				Basestand Leg Bushing
4	2	B-400-9562				Basestand End Panel Weldment 28"
5	4	B-500-390				Basestand Leg Extension
6	1	B-500-391-TAB	-01	-02	-04	Cross Member Panel Weldment 3'
7	*4	B-800-1579				LEG EXTENSION, BASE STAND EXTENDED HEIGHT
8	1	B-813-1510-01				Left Front 813 Basestand Bracket
9	1	B-813-1510-02				Right Front 813 Basestand Bracket
10	1	B-813-1511-01				Left Rear 813 Basestand Bracket
11	1	B-813-1511-02				Right Rear 813 Basestand Bracket
12	4	X-980443				LEG LEVELER FOR 2" SQ TUBING
13	8	X-980493				Acorn Nut 1/4-20 (Low Crown) SST
14	8	X-980494-03				Acorn Nut 3/8-16 SST
15	4	X-980609-06				Screw PPH #8-32 X 1-1/4 SST
16	20	X-980659-12				Bolt HHCS 1/4-20 X 5/8 SST
17	8	X-980781-07				Lock Washer 3/8 Internal Tooth SST
18	4	X-980783-03				Washer #8 SAE SST
19	16	X-980783-07				Washer 3/8 SAE Nickel
20	28	X-980794-02				Washer 1/4 SST
21	20	X-980815-01				Lock Washer 1/4 Internal Tooth SST
22	8	X-980929-01				Bolt 3/8-16 X 2-3/4 SST

REV	CO	DESCRIPTION	DATE	DFTR	CHKD
F	001624	UPDATED HARDWARE	12/16/2022	JB	DF



BOLT THRU THESE (2) HOLES FOR 36" WORK SURFACE HEIGHT

BOLT THRU THESE (2) HOLES FOR 30" WORK SURFACE HEIGHT



* EXTENDED HEIGHT OPTION		NU-813 NU-800-128 NU-800-129 NU-800-130 * NU-800-140 * NU-800-141 * NU-800-142	
TITLE		ASSEMBLY, 28" BASESTAND TELESCOPING W/LL	
DFTM	DATE	CHKD	SHEET
IW	4/13/2015	MSS	1 OF 1
DRAWING NUMBER		BCD-17400	
			F