



LABGARD^{ES}

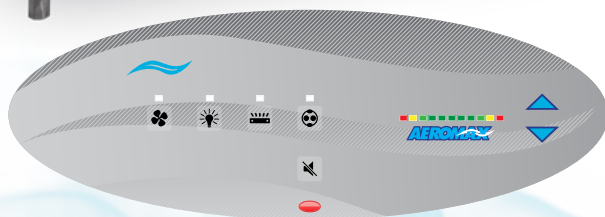
NU-540 CLASS II TYPE A2 BIOSAFETY CABINET



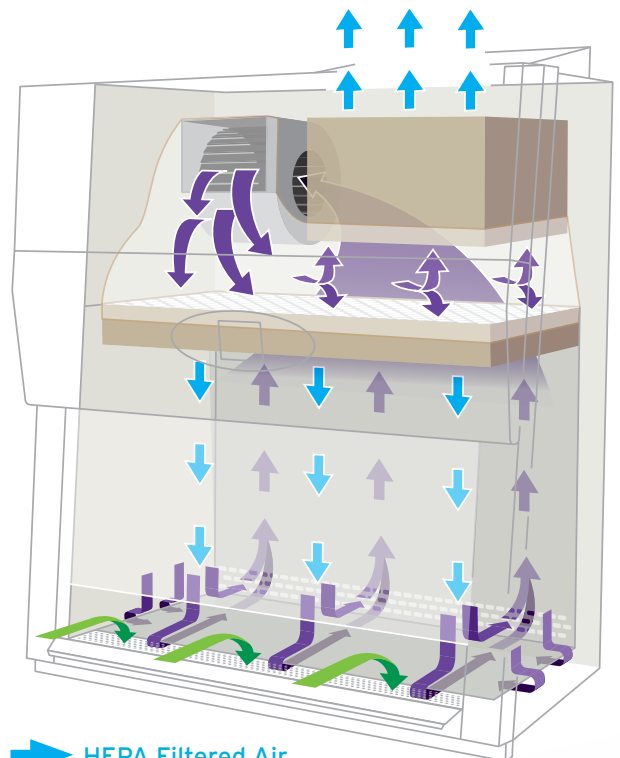
The LabGard[®] ES (Energy Saver) Model NU-540 Class II, Type A2 Biosafety Cabinet is a bench/table top model with available base stand options. The NU-540 offers economical operation through the use of a single ultra-high efficiency DC ECM blower to limit energy consumption and maximize filter lifespan. This model offers all the essential functions of a Type A2 biosafety cabinet at our most affordable price. NuAire's unique monolithic stainless steel construction makes cleaning your workspace quick and easy while also ensuring your cabinet remains strong and robust for its entire lifespan. Traditionally, Type A2 cabinets exhaust HEPA filtered air back into the lab, but, the NU-540 can be exhausted through your facility's HVAC system through an optional exhaust canopy attachment.






environmental,
product & personnel
protection



AeroMax™ Electronic Control System

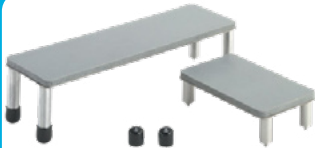


-  HEPA Filtered Air
-  Contaminated Work Zone Air
-  Contaminated Room Air

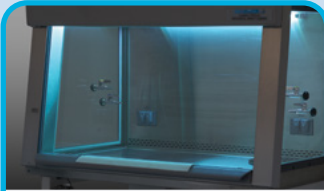
Popular Features & Accessories



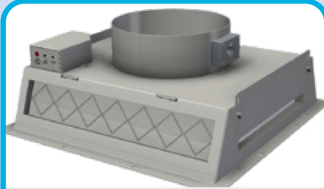
Removable Prop-Up Work Tray



Silicone-Padded Elbow Rests



Interior UV Light



Variable Flow Canopy (VFC) Exhaust Transition w/ Alarm



Cord Pass-through (NSF-Approved)

NU-540 Features & Specifications

Class, Type	Class II, Type A2
Cabinet Style	Bench Top w/ Optional Base Stand
Nominal Widths	3, 4, 5, 6 ft [0.9, 1.2, 1.5, 1.8 m]
Workspace Dimensions (W x D x H)	(34.375 / 46.375 / 58.375 / 70.375) x 25.75 x 28.5 in [(873 / 1178 / 1483 / 1788) x 654 x 724 mm]
Exterior Dimensions (W x D x H)	(41.6 / 53.6 / 65.6 / 77.6) x 32.1 x 61 in [(1057 / 1362 / 1669 / 1972) x 817 x 1546 mm]
Net Weight	400 - 620 lbs [181 - 281 kg]
Certifications	NSF / ANSI 49, CE, UL listed
Access Opening	8, 10 in [203, 254 mm]
Electrical Requirements	115 VAC / 60 Hz 230 VAC / 50-60 Hz
Filter Load Capacity	250%
Airflow	105 fpm [0.53 m/s] Dynamic Inflow, 60 fpm [0.30 m/s] True Laminar Downflow ISO Class 5 Air Protection
Supply Filter	3 in [76 mm] HEPA 99.99% Efficient @ 0.3 microns
Exhaust Filter	6 in [152 mm] HEPA 99.99% Efficient @ 0.3 microns
Control System	AeroMax™ with Audible/Visual Alarm
Airflow Sensor	PressureFlow™ Pressure Sensor
Lighting	LED Ultraviolet (UV) Light Option
Nitecare™ Compatible	Yes
Password Protection	Yes
Noise Level	Up to 63 dba*
Construction	Removable Stainless Steel Covered Work Tray with Prop-Up Stand 2 Back-Wall Outlets 3 Service Couplings and 1 Service Valve (Right/Left Sidewalls) Single Cord Pass-Through Port (Right Sidewall; NSF-Approved) Coved Interior Corners for Easy Cleaning Monolithic 16/18 gauge Stainless Steel Welded Pressure Tight Construction Recessed & Removable Front Intake Grill Stainless Steel Spill Trough w/ Drain Valve AttenuMont™ Vibration Control Support System Permanent Positive Pressure Plenum w/ Quick Release Supply Filter Removal Frameless Easy-to-Slide Viewing Window w/ Optional Stainless Steel Edge Protector Heavy Duty Plastic Armrest w/ Stainless Steel Option IV Bar w/ 3 Height Locations, 6 SST Hooks Additional Service Valves, Couplings, Cord Pass-Through Ports, and/or Outlets Seismic Brackets (Rear / Floor Mount)
Base Stand Accessories	Telescoping Adjustable Base Stand w/ Leg Levelers or Casters Base Stand Storage Cabinets Motorized Adjustable Base Stand w/ Leg Levelers or Casters
Accessories	Variable Flow or Fixed Exhaust Canopy Transition Adjustable Ergonomic Footrest Lay-In Charcoal/Purifil Transition Options 8 or 12 inch [203 or 305 mm] Base Stand Storage Shelves (Telescoping Only) Ergonomic Stainless Steel Turntable Silicone Cushioned Movable Elbow Rests
	Standard Feature
	Optional Feature

*Sound level measured at 15 inches (381 mm) above the work tray and 12 inches (305 mm) in front of viewing window.



To Learn More or Request a Quote:

Visit: www.nuaire.com
or Call: 1-763-553-1270
Toll Free: 1-800-328-3352



*Contact your local NuAire distributor for international warranty details.

